

## Severe Weather

### Evacuation Plans

#### **Severe Weather**

Tornadoes are a year-round possibility in Kansas, but are most likely to occur between April and June.

**Be Aware** – Monitor weather forecasts for severe thunderstorms.

**Have a Plan** – Included in this packet are three nearby locations to consider sheltering during a storm.

**When to Evacuate** – Evacuate the property and seek shelter in any of the following circumstances:

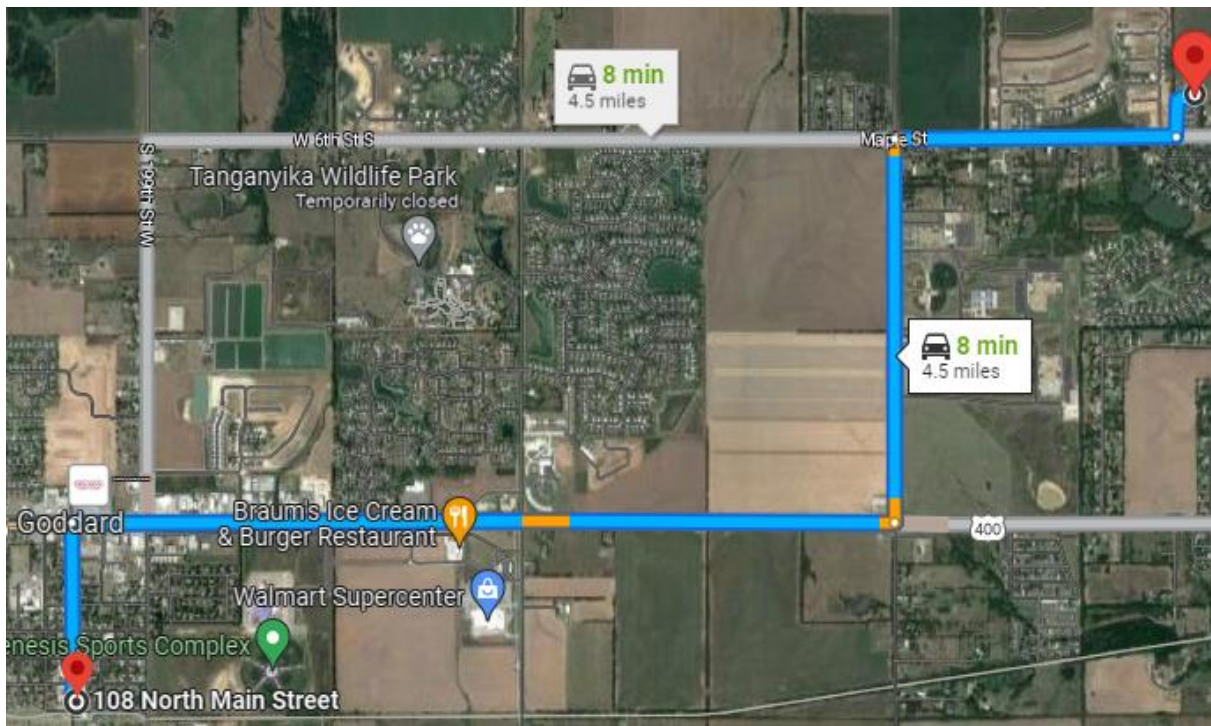
- If a tornado warning or severe thunderstorm warning is issued
- If you hear tornado sirens
- If notified to do so by park management

Severe Weather Shelter Locations – See pages to follow

# Severe Weather Shelter

The City of Goddard opens this storm shelter during severe weather threats.

Linear Park  
108 N. Main  
Goddard, KS 67052



From the RV park entrance, turn right on to W. Maple St., turn left on 167<sup>th</sup> St. W., turn right onto US 400 W/US-54 W/ W Kellogg Ave., turn left onto N. Main St. The shelter will be on your left.

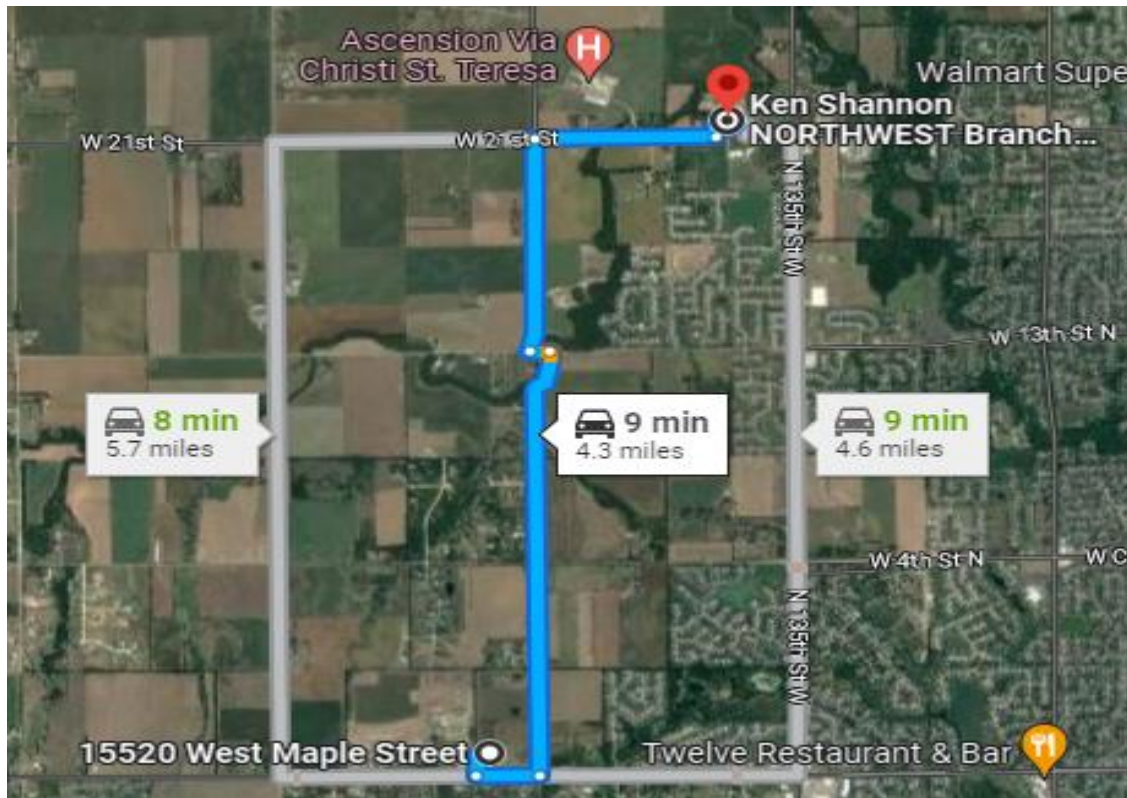
## Severe Weather – Alternate Shelter Location

Open Daily – Hours Vary. Currently open by 6:30am and closed no earlier than 7:00pm, as of March 9, 2023

This nearby YMCA location will allow non-members and members to shelter in their locker room facility in case of a storm.

Northwest YMCA  
13838 W. 21<sup>st</sup> St.  
Wichita, KS, 67235

PH: (316) 260-9622



From the RV park entrance, turn left onto W Maple St., turn left onto S. 151<sup>st</sup> St. W, turn left onto W. 13<sup>th</sup> St. N., turn right onto N. 151<sup>st</sup> St. W., turn right onto W. 21<sup>st</sup> St. The YMCA will be on your left.

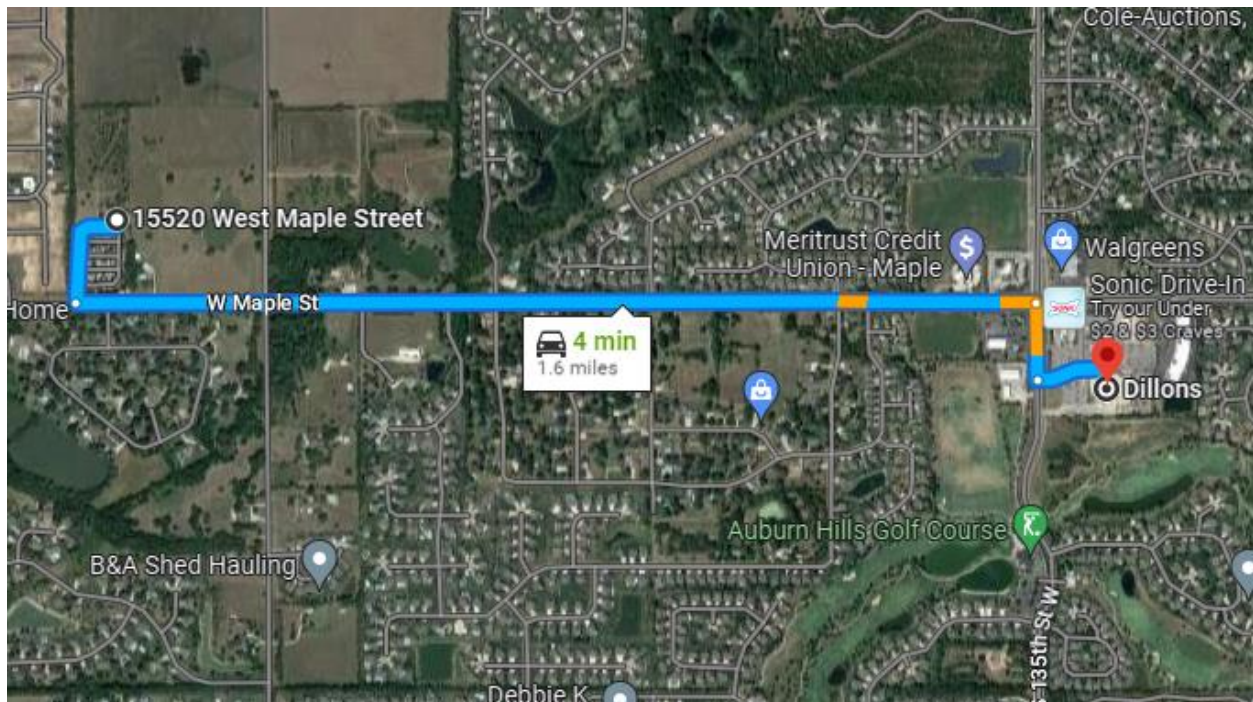
## Severe Weather – Alternate Location

Though not built as a shelter, this Dillons grocery store is near the RV Park and is open during much of each day. If you do not feel safe traveling to the other locations, then this would be more resilient permanent structure to shelter, versus an RV.

Business hours only (7am to 10pm daily, as of March 9, 2023)

Dillon's  
13415 W. Maple St.  
Wichita, KS 67235

PH: (316) 729-5200



From the RV Park entrance, turn left and head west on Maple St., then turn right onto S 135<sup>th</sup> St W, Dillon's will be on the left.